

Beck.

The adjustable
pressure switches Prescal



压力开关901

可调整参数

应用

检测气体、液体、也可以是腐蚀性介质,测量差压、表压和绝对压力.

温度范围

环境温度从-20~85°C.
介质温度最高可达85°C或者130°C由隔膜材料决定.

隔膜材料

硅树脂,NBR,VITON,EPDM.
901.8x是硅树脂,其他材料可选.

电气额定参数

AgNi触点: 6(1.5) A/250 VAC
 2 A/24 VDC
黄金触点: 100 mA/24 VAC
 30 mA/24 VDC

如客户特殊要求,AgNi触点可达到 10 A/250 VAC.

电气连接

AMP 连接 6.3 mm x 0.8 mm, DIN 46244 标准.

压力连接

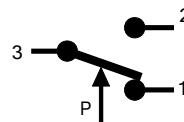
型号	管连接			螺纹连接			
	5.0 mm	6.5 mm	10.0 mm	M 10 x1	G	G	G 1/2
901.61-65	PA	PA, PPS	PA, PPS	PA, PVDF CuZn40, V ₂ A	PA, PVDF CuZn40, V ₂ A	CuZn40, V ₂ A	CuZn40
901.66 - 68				CuZn40, V ₂ A	CuZn40, V ₂ A	CuZn40, V ₂ A	CuZn40
901.71 - 76	PA	PA,PPS	PA,PPS	PA,PVDF CuZn40, V ₂ A	PA, PVDF CuZn40, V ₂ A	CuZn40, V ₂ A	
901.77 - 78				CuZn40, V ₂ A	CuZn40, V ₂ A	CuZn40, V ₂ A	CuZn40
901.8x		PA					
901.91-93				CuZn40	CuZn40, V ₂ A	CuZn40, V ₂ A	

PA=聚酰胺,PVDF=聚偏二氯乙烯,PPS=聚苯基丁二烯,CuZn40=铜,V₂A=不锈钢.

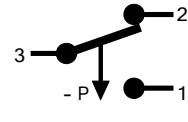
对于85°C以上的温度,铜,PVDF,PPS的压力接头是必须的.根据压力连接的型号不同,其他的塑料或者不锈钢接头也可以选用.

触点示意图

901.6x, 901.8x,
901.9x



901.7x



认证

通过CE认证的低压电气设备73/23/EEC.

机械工作寿命

超过100万次开关数

阻尼

带 0.3/0.5/0.8 mm的截流器.

附件

各类安装支架以及IP44,IP54和IP65的防护等级外壳.

安装位置 在满足设定要求的情况下,可以安装在任何位置 压力应在100mbar以下.



表压范围

型号	压力范围设定		开关精度	开关差 (回差、迟滞)	最大工作压力 标准/扩展	最大负压工作压力 标准/扩展
	从	到				
901.61	5	20 mbar	±10 %	3 mbar	0.5/4 bar	-/- 1 bar
901.62	10	50 mbar	±10 %	5 mbar	0.5/4 bar	-/- 1 bar
901.63	25	100 mbar	±10 %	10 mbar	0.5/4 bar	-/- 1 bar
901.64	50	250 mbar	±10 %	20 mbar	1/4 bar	-/- 1 bar
901.65	100	500 mbar	±10 %	50 mbar	1/4 bar	-/- 1 bar
901.66	250	1.000 mbar	±10 %	150 mbar	10 bar	-1 bar
901.67	500	1.500 mbar	±10 %	250 mbar	10 bar	-1 bar
901.68	1.000	3.000 mbar	±10 %	500 mbar	10 bar	-1 bar
901.91	1.0	6.0 bar	±10 %	0.5- 2.0 bar	25 bar	-1 bar
901.92	4.0	9.0 bar	±10 %	0.5- 2.0 bar	25 bar	-1 bar
901.93	7.0	12.0 bar	±10 %	0.5 - 2.0 bar	25 bar	-1 bar

真空压力范围

901.71	- 5	- 20 mbar	±10 %	3 mbar	0.5/4 bar	-1 bar
901.72	- 10	- 50 mbar	±10 %	5 mbar	0.5/4 bar	-1 bar
901.73	- 25	- 100 mbar	±10 %	10 mbar	0.5/4 bar	-1 bar
901.74	- 50	- 125 mbar	±10 %	20 mbar	0.5/4 bar	-1 bar
901.75	- 75	- 200 mbar	±10 %	25 mbar	1/4 bar	-1 bar
901.76	- 100	- 300 mbar	±10 %	30 mbar	1/4 bar	-1 bar
901.77	- 200	- 500 mbar	±10 %	75 mbar	1/4 bar	-1 bar
901.78	- 300	- 700 mbar	±10 %	75 mbar	1/4 bar	-1 bar

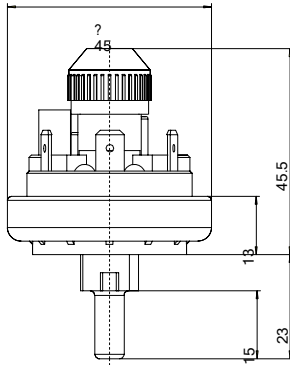
差压范围

901.81	5	20 mbar	±10 %	3 mbar	100 mbar	-100 mbar
901.82	10	50 mbar	±10 %	5 mbar	100 mbar	-100 mbar

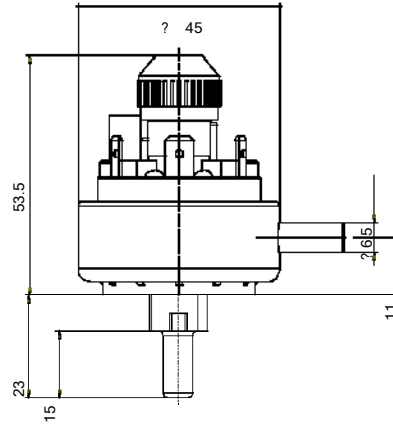
压力开关 901

可调整参数

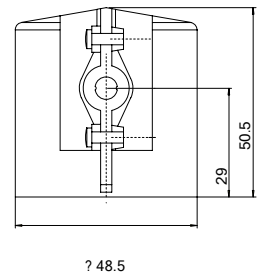
901.6x/7x



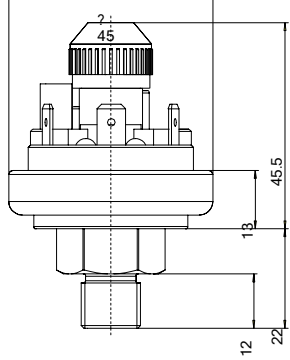
901.8x



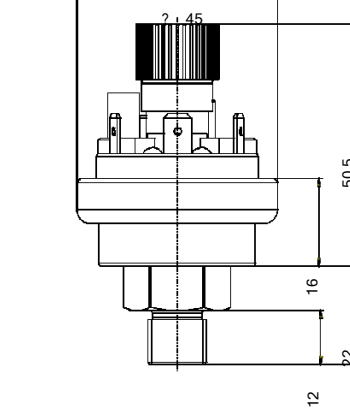
防护帽
6329 IP 44



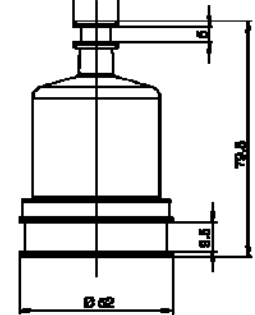
901.6x/7x



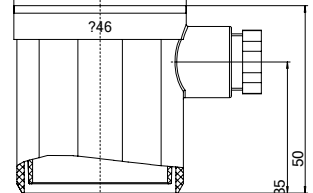
901.9x



6365 IP 54



6371 IP 54 / 6372 IP 65

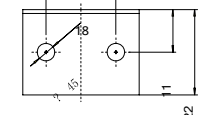
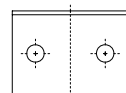
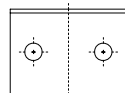
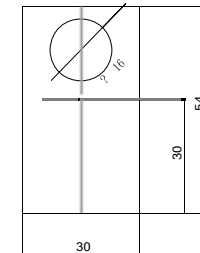
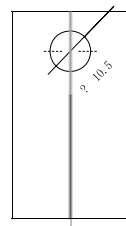
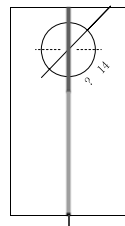
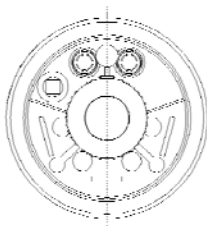


Mounting brackets

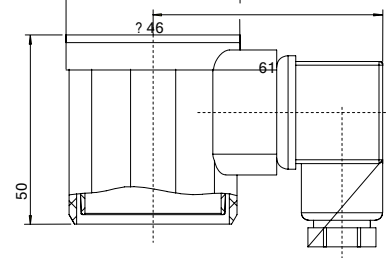
6403

6404

6405



6374 IP 54 / 6375 IP 65



上海露意仪器仪表有限公司
 上海市长宁区福泉路123弄2号楼
 602室 (200335)
 电话:021-62399426
 传真:021-52181180